



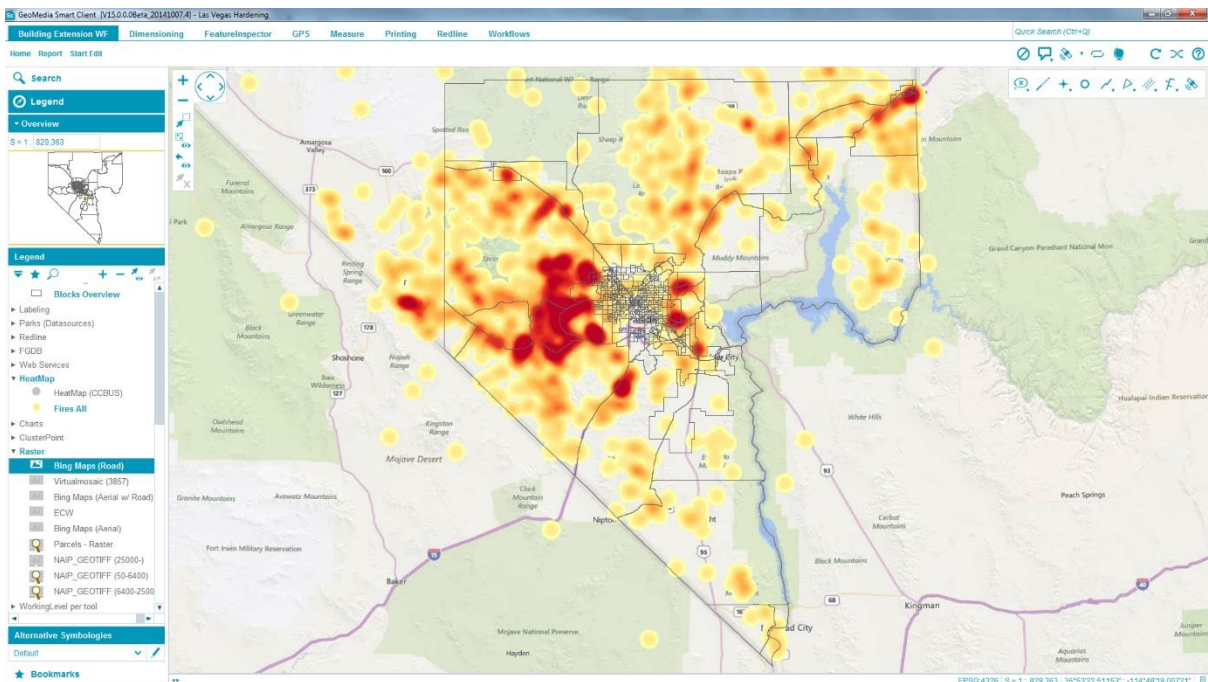
## GeoMedia Smart Client

GeoMedia Smart Client provides tools for building and delivering highly-constrained, map-based workflows for the office or the field.

- Streamlined, Task-Orientated Workflows
- Simpler Workflows, Sophisticated Tools
- Implement Once, Use Many Times



GeoMedia Smart Client is offered within the PLATFORM SUITE of the Power Portfolio. The Platform Suite enables you to create your own unique application on top of a solid foundation of powerful geospatial functionality. Supported by robust toolkits, detailed instructions, and interactive developer communities, you can build custom web, mobile, and other smart enterprise solutions.



GeoMedia Smart Client HeatMap

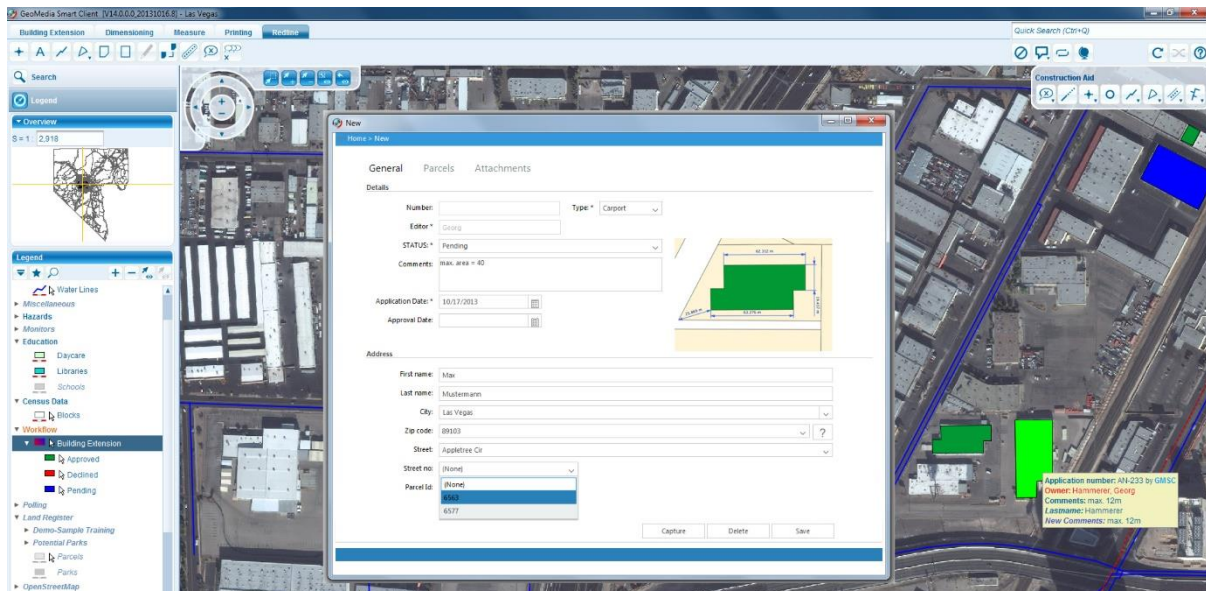
# Survey, Visualise, Integrate.

GeoMedia Smart Client allows a whole organisation to benefit from advanced geospatial processes and not just specialist GIS users, as it provides advanced spatial analysis with pre-defined Lines queries. It is easy to deploy and can be implemented into many different types of industries and supports an unlimited number of users.

IMGS work closely with customers to configure geospatial workflows to meet operational requirements across the enterprise, existing workflows include: Property Management, Planning Application and Enforcements Management and Cemetery Management.

## Key features

- Sophisticated caching technology, ability to cache large amounts of data quickly
- Advanced data capture tools
- Simple, user-driven workflows



GeoMedia Smart Client Workflow Manager

## IMGS and Hexagon Geospatial

IMGS is an Irish owned mapping and geographic information systems provider founded in 2002. IMGS serve over 50 customers across the island of Ireland; including local authorities, government agencies, utilities and communications organisations. Customer satisfaction is their number one priority and they work closely with customers to deliver a solution that is just right for them.

Hexagon Geospatial was formed in 2014, when the Intergraph geospatial technology portfolio was split from the Security, Government and Infrastructure division of Intergraph, to create Hexagon Geospatial. Mladen Stojic is the president of Hexagon Geospatial, after being the Vice President of the Geospatial division for Intergraph and with 15 years of combined experience across Hexagon companies.

