

# ESB and Application Integration

Deliver agile real-time integration of applications and data.

The reliable, scalable and secure enterprise service bus (ESB) products you need to simplify the connection, mediation and management of your services and applications.



## Heterogeneous Application and Data Integration.

Talend's open source ESB products combine an innovative, Eclipse-based tooling environment with messaging, Web services, data services, intelligent routing and data transformation. Talend enables developers to easily build reliable, scalable and secure REST, Web and data services to quickly integrate heterogeneous IT environments, both on-premises and in the cloud. The reuse of services across multiple applications maximizes initial investments, and its modular, pluggable architecture allows easy and scalable expansion.

## Integrate business applications, services, and APIs without coding.

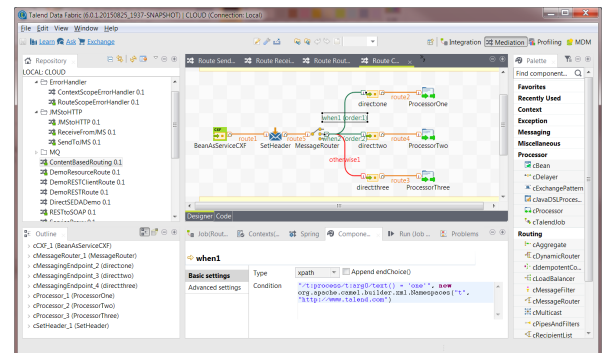
Only Talend ESB allows developers to develop, build, test and publish Java Web services, REST applications, data services and messaging routes – all from a single user interface. Talend speeds time to project completion by making developers more productive through an Eclipse-based tooling environment for modeling, configuring, and deploying integration solutions. Talend allows you to design integration solutions based on Enterprise Integration Patterns (EIPs) – a standard set of integration templates used to address common integration needs.

## Solve even the most complex connectivity and mapping problems.

Talend ESB allows users to effortlessly combine data integration with a Web service using a graphical palette of components and connectors, such as AMQP and MQTT (including AWS IoT Gateway). Users can leverage a WSDL-first approach to integration to efficiently deploy multiple data services behind a single interface on a common ESB runtime. Talend's open source ESB provides access to a library of over 900+ connectors and components supporting all types of sources and targets for data integration, migration or synchronization.

## Deliver and enforce enterprise security requirements.

Talend ESB speeds deployments and upgrades through a centralized deployment console enabling organizations to rapidly respond to integration requests. Developers and administrators gain complete control over the deployment and upgrade process for Web services, REST applications, data services and messaging routes deployed to Talend ESB. Application and data service events are easily monitored with drill-down capabilities into individual service statistics for in-depth analysis of inter-process service activity.



## Compare ESB Products

Choose the ESB solution that best fits your project needs.



### White Paper: Democratizing the ESB

<https://info.talend.com/democratizingesb.html?type=datasheet>

Features	Talend Open Studio for ESB	Talend ESB	Talend Data Services Platform
License	Open Source <a href="#">Apache License v2</a>	Subscription	Subscription
Modeling and Development	800+ components & connectors	+ Repository, identity management	+ Repository, identity management
Extensive integration capabilities	Service creation, data integration	+ Support for EIPs	+ ETL & ELT, visual mapping
Increase trust with data quality	—	—	Profiling, matching, and standardization
Faster deployment	ESB and web services	+ Shared repository	+ Repository manager, APIs
Collaborate better and manage more	Service monitoring, plug-ins	+ Talend Administration Center	+ Execution planning, high availability
Support	TalendForge Community, Help Center access	+ Guaranteed response times, web and email support	+ Phone support, faster response, optional 24/7
Indemnification/warranty	—	✓	✓
Where to get it	<b>Free Download</b>	<b>Request Info</b>	<b>Request Info</b>

*“We were looking for a solution that could provide a combination of cost-effectiveness, breadth of functionality and agility, while enabling us both to rapidly develop an interface to our solutions or processes and to develop the product quickly and intuitively configure it.”*

*Derek Usher, CIO, Travelex*

## Specifications

Talend ESB includes support of the following third party components, products and operating systems as of time of publication. For full and up-to-date product documentation and release notes, visit [help.talend.com](http://help.talend.com).



### Webinar: 3 Steps to Developing ESB Solutions

[https://info.talend.com/en\\_esb\\_3\\_steps.html?type=datasheet](https://info.talend.com/en_esb_3_steps.html?type=datasheet)

#### Support for Standards, APIs and Formats

- JAX-WS - Java API for XML-Based Web Services (JAX-WS) 2.2 - JSR-224
- Web Services Metadata for the Java Platform - JSR-181
- JAX-RS 1.1 / 2.0 - The Java API for RESTful Web Services - JSR-311
- SAAJ - SOAP with Attachments API for Java (SAAJ) - JSR-67
- WS-I support: Basic Profile 1.1, Basic Security Profile 1.1
- Quality of Service: WS-Reliable Messaging 1.1
- XKMS – XML Key Management Specification 2.0
- Metadata: WS-Policy, WSDL 1.1 - Web Service Definition Language
- Communication Security: WS-Security 1.1, WS-SecurityPolicy 1.3, WS-SecureConversation 1.3, WS-Trust 1.4
- Messaging Support: WS-Addressing, SOAP 1.1, SOAP 1.2, Message Transmission Optimization Mechanism (MTOM)
- Authorization Policies: XACML 2.0, RBAC Profile of XACML 2.0
- Policies: Compression Policy, Customer Schema (XSD) Validation Policy, XSLT Transformation Policy
- SAML support: SAML 1.1 and 2.0, SecurityTokenService
- REST security: XML Signature + Encryption, OAuth 1.0 and 2.0
- SSO support: SAML SSO Profile 2.0, WS-Federation 1.2 Passive Requestor Profile

#### Support for Transports, Bindings, Data Bindings and Formats

- Bindings: SOAP, REST/HTTP
- Data bindings: Aegis, JAXB 2.2, SDO, XMLBeans, JIBX
- Formats: XML, JSON
- Transports/Protocols: HTTP, Servlet, JMS, MQTT, AMQP, UDP and many others via the Camel transport for CXF such as SMTP/POP3, TCP and Jabber or using a Talend ESB Route in between. Extensibility API allows additional bindings for CXF, enabling additional message format support such as CSV and fixed record length.

#### Flexible Deployment

- Lightweight containers: deploy services in OSGi (Talend Runtime), Apache Tomcat or Spring-based containers
- Java EE integration: deploy services in JEE application servers such as RedHat JBoss AS, and IBM WebSphere
- Stand-alone Java client/server

#### Support for Programming Languages

- Java SE (incl. the use of the JAX-WS 2.2. and JAX-RS 2.0 )
- CORBA
- XQuery, SQL, XPath
- Scripting languages: Groovy, JavaScript, ECMAScript, PHP, and Ruby

#### Supported Database and Storage Connectivity

- Amazon RDS, Amazon Redshift, Amazon S3, Apache HBase, AS400, DB2, Derby DB, Exasol, eXist-db, Firebird, Google Storage, Greenplum, H2, HIVE, HSQLDB, Informix, Ingres, InterBase, JavaDB, JDBC, MariaDB, MaxDB, Microsoft OLE-DB, Microsoft SQL Server, MySQL, Netezza, Oracle, ParAccel, PostgreSQL, PostgresPlus, SAS, SQLite, Sybase, Teradata, VectorWise, Vertica, Windows Azure Blob Storage

#### Supported Operating Systems

- CentOS Linux
- OS X
- Redhat Enterprise Linux
- Solaris
- SUSE Linux
- Ubuntu Linux
- Microsoft Windows

#### Platform Products Include Supported SaaS and 3rd Party Applications

- Alfresco
- Centric CRM
- Marketo
- Microsoft CRM and AX
- NetSuite
- Open Bravo
- SAGE X3
- Salesforce.com
- Salesforce Wave
- SAP
- SugarCRM
- Vtiger CRM

#### Full List of Supported Systems and Databases, Components and Connectors

Please see [www.talend.com](http://www.talend.com)